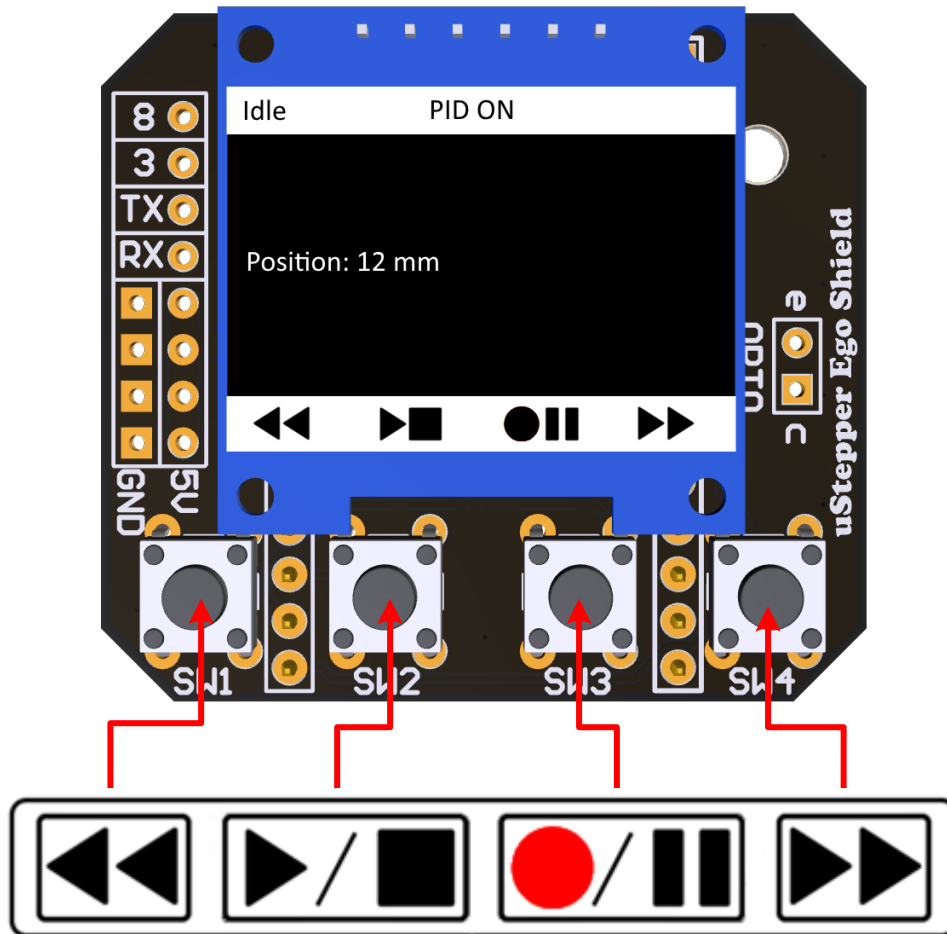


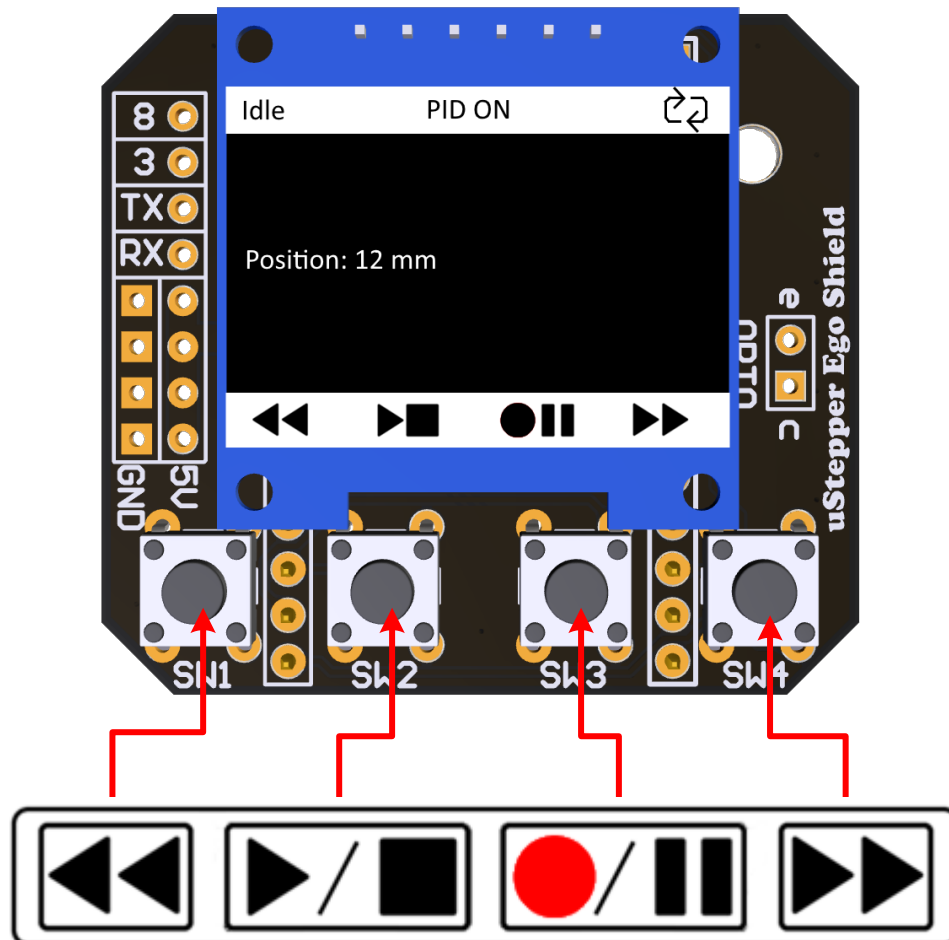
## egoShield with 4 push-buttons and OLED display



### The TimeLapse library has the following functionality:

- Idle state
  - Press **FWD** or **REV** to manually move 1mm in either direction
  - Press and hold **FWD** or **REV** to move continuous until releasing
  - Press **RECORD** to enter TimeLapse state
  - Press and hold **STOP** to invert PID mode (either PID ON or PID OFF)
- TimeLapse state
  - Press **FWD** or **REV** to Change the value in the menu
  - Press **RECORD** to Move to the next menu item
  - After reaching the final item, press **PLAY** to start TimeLapse
  - Press **STOP** to exit TimeLapse state, and return to Idle state

## egoShield with 4 push-buttons and OLED display



### The Teach library has the following functionality:

- Idle state
  - Press **FWD** or **REV** to manually move 1mm in either direction
  - Press and hold **FWD** or **REV** to move continuous until releasing
  - Press **RECORD** to enter recording state
  - Press **PLAY** to enter Play state, and play recorded sequence
  - Press and hold **STOP** to invert PID mode (either PID ON or PID OFF)
- Record state
  - Press **RECORD** to record position
  - Press and hold **STOP** to go into Idle state again
  - If PID ON:
    - Press **FWD** or **REV** to manually move 1mm in either direction
    - Press and hold **FWD** or **REV** to move continuous until releasing
  - If PID OFF:
    - Also possible to move by hand
- Play state
  - Press **FWD** or **REV** to change speed
    - Press **PLAY** again to start sequence
    - Press **PAUSE** to enter Pause state at next position
  - Press and hold **STOP** to stop play and go into Idle state
  - Press and hold **FWD** to play sequence in loop
  - Press and hold **REV** to stop looping
- Pause state
  - Press **PLAY** to continue playing by entering Play state
  - Press and hold **STOP** to go into Idle state